

Rate of Flow and Faucet Icon Leak Indicator

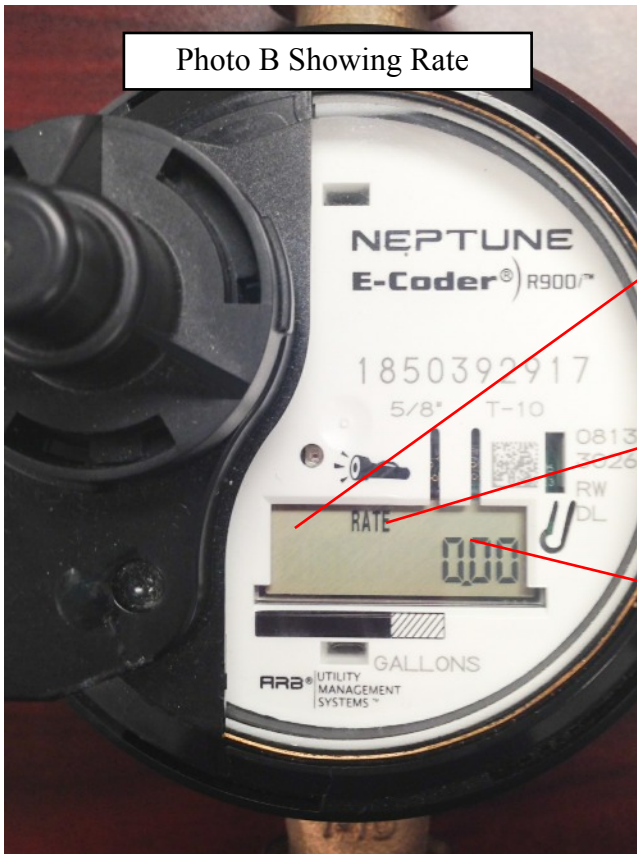


Photo B Showing Rate

Leak Indicator Faucet Icon Will Appear Here if Possible Leak Detected

The Word "RATE" Indicates Rate of Flow Mode

Rate of Flow Indicated in Gallons Per Minute

Your Neptune E-Coder R-900 water meter has a couple of handy features to help with leak detection. In photo B, notice the word "Rate" on the LCD screen. The word "Rate" on your water meter means rate of flow. The numbers shown on the meter when it is in "rate" mode is the amount of water in gallons per minute that is passing through the meter at that moment. If a rate of flow other than "0" is indicated and you have all faucets and water using appliances shut off, this indicates a leak. There is also a leak indicator faucet icon that will appear either solid or flashing when a possible leak has been detected. See Photo B for reference.

If the leak indicator icon appears as *solid* (not flashing), a possible continuous leak has been detected. The *flashing* faucet icon indicates a possible intermittent leak. In either case, check the last digit on your meter screen to see if the numbers are incrementing. If the numbers are incrementing, and you are not using water, you have a leak.

WHAT DO I NEED TO DO IF I HAVE A LEAK?

If you have followed these procedures and a leak is indicated, it is always best to call a licensed plumber to make repairs. Smiths Water & Sewer Authority does not service leaks on the customer side of the meter.